



SINCE 2020

**HITY**

**HARD IN THE YARD ENTertainment**

[www.hardintheyardent.com](http://www.hardintheyardent.com)



**Hity Since 2020 Hity Merchandise**

\$24.99

TRUCKER HATS



- PRODUCT CODE: 000011
- DESCRIPTION : 100% COTTON & LINING UNSTRUCTURED DETAILS :
- ADJUSTABLE PLASTIC SNAP CLOSURE SIZE: HEAD
- CIRCUMFERENCE 21" - 24" / 54-62 cm COLOUR: White, Black, Sport Grey, Forest Green, Charcole, Royal, Navy, Red
- **FEATURES:**REGULAR FIT ,EMBROIDERY STITCHING, RUNS TO
- TRUE SIZE

**\$24.99**

**MESH HAT**



- **PRODUCT CODE: 000012**
- **DESCRIPTION : 100% COTTON LINING UNSTRUCTURED & MESH HAT**
- **DETAILS : ADJUSTABLE PLASTIC SNAP CLOSURE**
- **SIZE: HEAD CIRCUMFERENCE 21" - 24" / 54-62 cm**
- **COLOUR: White, Black, Sport Grey, Forest Green, Charcole, Royal, Navy, Red**
- **FEATURES:REGULAR FIT ,SILK SCREEN PRINTING, RUNS TO TRUE SIZE**



**\$24.99**

**MESH HAT**



- **PRODUCT CODE: 000013**
- **DESCRIPTION : 100% COTTON LINING UNSTRUCTURED & MESH HAT**
- **DETAILS : ADJUSTABLE PLASTIC SNAP CLOSURE**
- **SIZE: HEAD CIRCUMFERENCE 21" - 24" / 54-62 cm**
- **COLOUR: White, Black, Sport Grey, Forest Green, Charcole, Royal, Navy, Red**
- **FEATURES:REGULAR FIT ,SILK SCREEN PRINTING, RUNS TO TRUE SIZE**

**\$24.99**

**MESH HAT**



- **PRODUCT CODE: 000014**
- **DESCRIPTION : 100% COTTON LINING UNSTRUCTURED & MESH HAT**
- **DETAILS : ADJUSTABLE PLASTIC SNAP CLOSURE**
- **SIZE: HEAD CIRCUMFERENCE 21" - 24" / 54-62 cm**
- **COLOUR: White, Black, Sport Grey, Forest Green, Charcole, Royal, Navy, Red**
- **FEATURES:REGULAR FIT ,SILK SCREEN PRINTING, RUNS TO TRUE SIZE**



**\$24.99**

**MESH HAT**



- **PRODUCT CODE: 000015**
- **DESCRIPTION : 100% COTTON LINING UNSTRUCTURED & MESH HAT**
- **DETAILS : ADJUSTABLE PLASTIC SNAP CLOSURE**
- **SIZE: HEAD CIRCUMFERENCE 21" - 24" / 54-62 cm**
- **COLOUR: White, Black, Sport Grey, Forest Green, Charcole, Royal, Navy, Red**
- **FEATURES:REGULAR FIT ,SILK SCREEN PRINTING, RUNS TO TRUE SIZE**



**\$24.99**

**MESH HAT**

- **PRODUCT CODE: 000015**
- **DESCRIPTION : 100% COTTON LINING UNSTRUCTURED & MESH HAT**
- **DETAILS : ADJUSTABLE PLASTIC SNAP CLOSURE**
- **SIZE: HEAD CIRCUMFERENCE 21" - 24" / 54-62 cm**
- **COLOUR: White, Black, Sport Grey, Forest Green, Charcole, Royal, Navy, Red**
- **FEATURES:REGULAR FIT ,SILK SCREEN PRINTING, RUNS TO TRUE SIZE**





**\$24.99**

**MESH HAT**

- **PRODUCT CODE: 000015**
- **DESCRIPTION : 100% COTTON LINING UNSTRUCTURED & MESH HAT**
- **DETAILS : ADJUSTABLE PLASTIC SNAP CLOSURE**
- **SIZE: HEAD CIRCUMFERENCE 21" - 24" / 54-62 cm**
- **COLOUR: White, Black, Sport Grey, Forest Green, Charcole, Royal, Navy, Red**
- **FEATURES:REGULAR FIT ,SILK SCREEN PRINTING, RUNS TO TRUE SIZE**





**\$24.99**

**MESH HAT**

- **PRODUCT CODE: 000015**
- **DESCRIPTION : 100% COTTON LINING UNSTRUCTURED & MESH HAT**
- **DETAILS : ADJUSTABLE PLASTIC SNAP CLOSURE**
- **SIZE: HEAD CIRCUMFERENCE 21" - 24" / 54-62 cm**
- **COLOUR: White, Black, Sport Grey, Forest Green, Charcole, Royal, Navy, Red**
- **FEATURES:REGULAR FIT ,SILK SCREEN PRINTING, RUNS TO TRUE SIZE**





\$72.99

PULLOVER HOODIE



- PRODUCT CODE: 000016
- DESCRIPTION : 80% COTTON & 20 POLYESTER DETAILS : DOUBLE
- NEEDLE S TITCHING THROUGHOUT
- SIZE : XS,S,M,L,XL,2XL,3XL COLOUR:
- White, Black, Sport Grey, Forest
- Green, Charcole, Royal, Navy, Red
- **FEATURES:**REGULAR FIT , SILK SCREEN PRINTING , BREATHABLE ,
- ULTRA SOFT FLEECE , TWO LAYERS HOOD



**\$72.99**

**PULLOVER HOODIE**

- **PRODUCT CODE: 000017**
- **DESCRIPTION : 80% COTTON & 20 POLYESTER**
- **DETAILS : DOUBLE NEEDLE S TITCHING THROUGHOUT**
- **SIZE : XS,S,M,L,XL,2XL,3XL**
- **COLOUR: White, Black, Sport Grey, Forest Green, Charcole, Royal, Navy, Red**
- **FEATURES:REGULAR FIT , 3 COLOR SILK SCREEN PRINTING , BREATHABLE , ULTRA SOFT FLEECE , TWO LAYERS HOOD**





\$72.99

PULLOVER HOODIE



- PRODUCT CODE: 000018
- DESCRIPTION : 80% COTTON & 20 POLYESTER DETAILS : DOUBLE
- NEEDLE S TITCHING THROUGHOUT
- SIZE : XS,S,M,L,XL,2XL,3XL COLOUR:
- White, Black, Sport Grey, Forest
- Green, Charcole, Royal, Navy, Red
- **FEATURES:**REGULAR FIT , SILK SCREEN PRINTING , BREATHABLE ,
- ULTRA SOFT FLEECE , TWO LAYERS HOOD



\$72.99

PULLOVER HOODIE



- PRODUCT CODE: 000019
- DESCRIPTION : 80% COTTON & 20 POLYESTER DETAILS : DOUBLE
- NEEDLE S TITCHING THROUGHOUT
- SIZE : XS,S,M,L,XL,2XL,3XL COLOUR:
- White, Black, Sport Grey, Forest
- Green, Charcole, Royal, Navy, Red
- **FEATURES:**REGULAR FIT , SILK SCREEN PRINTING , BREATHABLE ,
- ULTRA SOFT FLEECE , TWO LAYERS HOOD



\$72.99

PULLOVER HOODIE



- PRODUCT CODE: 000020
- DESCRIPTION : 80% COTTON & 20 POLYESTER DETAILS : DOUBLE NEEDLE STITCHING THROUGHOUT
- SIZE : XS,S,M,L,XL,2XL,3XL C OLOUR:
- White, Black, Sport Grey, Forest Green, Charcole, Royal, Navy, Red
- **FEATURES:**REGULAR FIT , SILK SCREEN PRINTING , BREATHABLE ,
- ULTRA SOFT FLEECE , TWO LAYERS HOOD



\$72.99

PULLOVER HOODIE



- PRODUCT CODE: 000021
- DESCRIPTION : 80% COTTON & 20 POLYESTER DETAILS : DOUBLE NEEDLE STITCHING THROUGHOUT
- SIZE : XS,S,M,L,XL,2XL,3XL C OLOUR:
- White, Black, Sport Grey, Forest Green, Charcole, Royal, Navy, Red
- **FEATURES:**REGULAR FIT , SILK SCREEN PRINTING , BREATHABLE ,
- ULTRA SOFT FLEECE , TWO LAYERS HOOD



**\$72.99**

**PULLOVER HOODIE**



- **PRODUCT CODE: 000022**
- **DESCRIPTION : 80% COTTON & 20 POLYESTER**
- **DETAILS : DOUBLE NEEDLE S TITCHING THROUGHOUT**
- **SIZE : XS,S,M,L,XL,2XL,3XL**
- **COLOUR: White, Black, Sport Grey, Forest Green, Charcole, Royal, Navy, Red**
- **FEATURES:REGULAR FIT , SILK SCREEN PRINTING , BREATHABLE , ULTRA SOFT FLEECE , TWO LAYERS HOOD**



**\$72.99**

**PULLOVER HOODIE**



- **PRODUCT CODE: 000023**
- **DESCRIPTION : 80% COTTON & 20 POLYESTER**
- **DETAILS : DOUBLE NEEDLE S TITCHING THROUGHOUT**
- **SIZE : XS,S,M,L,XL,2XL,3XL**
- **COLOUR: White, Black, Sport Grey, Forest Green, Charcole, Royal, Navy, Red**
- **FEATURES:REGULAR FIT , SILK SCREEN PRINTING , BREATHABLE , ULTRA SOFT FLEECE , TWO LAYERS HOOD**



**\$72.99**

**PULLOVER HOOD**

- **PRODUCT CODE: 000024**
- **DESCRIPTION : 80% COTTON & 20 POLYESTER**
- **DETAILS : DOUBLE NEEDLE STITCHING THROUGHOUT**
- **SIZE : XS,S,M,L,XL,2XL,3XL**
- **C OLOUR: White, Black, Sport Grey, Forest Green, Charcole, Royal, Navy, Red**
- **FEATURES:REGULAR FIT , DTF PRINTING , BREATHABLE , ULTRA SOFT FLEECE , TWO LAYERS HOOD**





\$72.99

PSUTLSL LOVNEGR BHOOTD



- PRODUCT CODE: 000025
- DESCRIPTION : 80% COTTON & 20 POLYESTER DETAILS : DOUBLE NEEDLE STITCHING THROUGHOUT SIZE : XS,S,M,L,XL,2XL,3XL COLOUR: White, Black, Sport Grey, Forest Green, Charcole, Royal, Navy, Red
- **FEATURES:**REGULAR FIT , SILK SCREEN PRINTING , BREATHABLE ,
- ULTRA SOFT FLEECE , TWO LAYERS HOOD



**\$72.99**

**ZIPPER HOODIE**

- **PRODUCT CODE: 000026**
- **DESCRIPTION : 80% COTTON & 20 POLYSTER**
- **DETAILS : DOUBLE NEEDLE STITCHING THROUGHOUT**
- **SIZE : XS,S,M,L,XL,2XL,3XL**
- **COLOUR: White, Black, Sport Grey, Forest Green, Charcole, Royal, Navy, Red**
- **FEATURES:REGULAR FIT , SILK SCREEN PRINTING , BREATHABLE , ULTRA SOFT FLEECE , TWO LAYERS HOOD , YKK ZIP**





**\$72.99**

**ZIPPER HOODIE**



- **PRODUCT CODE: 000027**
- **DESCRIPTION : 80% COTTON & 20 POLYESTER**
- **DETAILS : DOUBLE NEEDLE STITCHING THROUGHOUT**
- **SIZE : XS,S,M,L,XL,2XL,3XL**
- **COLOUR: White, Black, Sport Grey, Forest Green, Charcole, Royal, Navy, Red**
- **FEATURES:REGULAR FIT , SILK SCREEN PRINTING , BREATHABLE , ULTRA SOFT FLEECE , TWO LAYERS HOOD , YKK ZIP**



**\$72.99**

**PULL OVER HOODIE**



- **PRODUCT CODE: 000028**
- **DESCRIPTION : 80% COTTON & 20 POLYESTER DETAILS : DOUBLE NEEDLE STITCHING THROUGHOUT**
- **SIZE : XS,S,M,L,XL,2XL,3XL COLOUR:**
- **White, Black, Sport Grey, Forest Green, Charcole, Royal, Navy, Red**
- **FEATURES:REGULAR FIT , SILK SCREEN PRINTING , BREATHABLE ,**
- **ULTRA SOFT FLEECE , TWO LAYERS HOOD , YKK ZIP**



Sweatshirt \$69.99

Sweatpant \$ 59.99

**10% Discount**

# TRACKSUIT

- PRODUCT CODE: 000028
- DESCRIPTION : 80% COTTON & 20 POLYESTER DETAILS : DOUBLE NEEDLE STITCHING THROUGHOUT
- SIZE : XS,S,M,L,XL,2XL,3XL COLOUR:
- White, Black, Sport Grey, Forest Green, Charcole, Royal, Navy, Red
- **FEATURES:**REGULAR FIT , SILK SCREEN PRINTING , BREATHABLE ,
- ULTRA SOFT FLEECE , TWO LAYERS HOOD , YKK ZIP





Sweatshirt \$69.99

Sweatpant \$ 59.99

**10% Discount**

# TRACKSUIT

- PRODUCT CODE: 000028
- DESCRIPTION : 80% COTTON & 20 POLYESTER DETAILS : DOUBLE NEEDLE STITCHING THROUGHOUT
- SIZE : XS,S,M,L,XL,2XL,3XL COLOUR:
- White, Black, Sport Grey, Forest Green, Charcole, Royal, Navy, Red
- **FEATURES:**REGULAR FIT , SILK SCREEN PRINTING , BREATHABLE ,
- ULTRA SOFT FLEECE , TWO LAYERS HOOD , YKK ZIP





Sweatshirt \$69.99

Sweatpant \$ 59.99

**10% Discount**

# TRACKSUIT



- PRODUCT CODE: 000028
- DESCRIPTION : 80% COTTON & 20 POLYESTER DETAILS : DOUBLE NEEDLE STITCHING THROUGHOUT
- SIZE : XS,S,M,L,XL,2XL,3XL COLOUR:
- White, Black, Sport Grey, Forest Green, Charcole, Royal, Navy, Red
- **FEATURES:**REGULAR FIT , SILK SCREEN PRINTING , BREATHABLE ,
- ULTRA SOFT FLEECE , TWO LAYERS HOOD , YKK ZIP



Sweatshirt \$69.99

Sweatpant \$ 59.99

**10% Discount**

# TRACKSUIT

- PRODUCT CODE: 000028
- DESCRIPTION : 80% COTTON & 20 POLYESTER DETAILS : DOUBLE NEEDLE STITCHING THROUGHOUT
- SIZE : XS,S,M,L,XL,2XL,3XL COLOUR:
- White, Black, Sport Grey, Forest Green, Charcole, Royal, Navy, Red
- **FEATURES:**REGULAR FIT , SILK SCREEN PRINTING , BREATHABLE ,
- ULTRA SOFT FLEECE , TWO LAYERS HOOD , YKK ZIP





Sweatshirt \$69.99

Sweatpant \$ 59.99

**10% Discount**

## HITYGIRL Tracksuit

- PRODUCT CODE: 000028
- DESCRIPTION : 80% COTTON & 20 POLYESTER DETAILS : DOUBLE NEEDLE STITCHING THROUGHOUT
- SIZE : XS,S,M,L,XL,2XL,3XL COLOUR:
- White, Black, Sport Grey, Forest Green, Charcole, Royal, Navy, Red
- **FEATURES:**REGULAR FIT , SILK SCREEN PRINTING , BREATHABLE ,
- ULTRA SOFT FLEECE , TWO LAYERS HOOD , YKK ZIP





Sweatshirt \$69.99

Sweatpant \$ 59.99

**10% Discount**

## HITYGIRL Tracksuit

- PRODUCT CODE: 000028
- DESCRIPTION : 80% COTTON & 20 POLYESTER DETAILS : DOUBLE NEEDLE STITCHING THROUGHOUT
- SIZE : XS,S,M,L,XL,2XL,3XL COLOUR:
- White, Black, Sport Grey, Forest Green, Charcole, Royal, Navy, Red
- **FEATURES:**REGULAR FIT , SILK SCREEN PRINTING , BREATHABLE ,
- ULTRA SOFT FLEECE , TWO LAYERS HOOD , YKK ZIP





Sweatshirt \$69.99

Sweatpant \$ 59.99

**10% Discount**

## HITYGIRL Tracksuit

- PRODUCT CODE: 000028
- DESCRIPTION : 80% COTTON & 20 POLYESTER DETAILS : DOUBLE NEEDLE STITCHING THROUGHOUT
- SIZE : XS,S,M,L,XL,2XL,3XL COLOUR:
- White, Black, Sport Grey, Forest Green, Charcole, Royal, Navy, Red
- **FEATURES:**REGULAR FIT , SILK SCREEN PRINTING , BREATHABLE ,
- ULTRA SOFT FLEECE , TWO LAYERS HOOD , YKK ZIP





Sweatshirt \$69.99

Sweatpant \$ 59.99

**10% Discount**

## HITYGIRL Tracksuit

- PRODUCT CODE: 000028
- DESCRIPTION : 80% COTTON & 20 POLYESTER DETAILS : DOUBLE NEEDLE STITCHING THROUGHOUT
- SIZE : XS,S,M,L,XL,2XL,3XL COLOUR:
- White, Black, Sport Grey, Forest Green, Charcole, Royal, Navy, Red
- **FEATURES:**REGULAR FIT , SILK SCREEN PRINTING , BREATHABLE ,
- ULTRA SOFT FLEECE , TWO LAYERS HOOD , YKK ZIP





**\$34.99**

**COTTON T SHIRT**

- **PRODUCT CODE: 000029**
- **DESCRIPTION : 100% COTTON**
- **DETAILS : DOUBLE NEEDLE , FITTED RIBBED NECK, STITCHING THROUGHOUT**
- **SIZE : XS,S,M,L,XL,2XL,3XL**
- **COLOUR: White, Black, Sport Grey, Forest Green, Charcole, Royal, Navy, Red**
- **FEATURES:REGULAR FIT , SILK SCREEN PRINTING , BREATHABLE , ULTRA SOFT FABRIC , TRUE TO SIZE**





**\$34.99**

**COTTON T SHIRT**

- **PRODUCT CODE: 000029**
- **DESCRIPTION : 100% COTTON**
- **DETAILS : DOUBLE NEEDLE , FITTED RIBBED NECK, STITCHING THROUGHOUT**
- **SIZE : XS,S,M,L,XL,2XL,3XL**
- **COLOUR: White, Black, Sport Grey, Forest Green, Charcole, Royal, Navy, Red**
- **FEATURES:REGULAR FIT , SILK SCREEN PRINTING , BREATHABLE , ULTRA SOFT FABRIC , TRUE TO SIZE**





**\$34.99**

**COTTON T SHIRT**

- **PRODUCT CODE: 000029**
- **DESCRIPTION : 100% COTTON**
- **DETAILS : DOUBLE NEEDLE , FITTED RIBBED NECK, STITCHING THROUGHOUT**
- **SIZE : XS,S,M,L,XL,2XL,3XL**
- **COLOUR: White, Black, Sport Grey, Forest Green, Charcole, Royal, Navy, Red**
- **FEATURES:REGULAR FIT , SILK SCREEN PRINTING , BREATHABLE , ULTRA SOFT FABRIC , TRUE TO SIZE**





**\$34.99**

**COTTON T SHIRT**

- **PRODUCT CODE: 000029**
- **DESCRIPTION : 100% COTTON**
- **DETAILS : DOUBLE NEEDLE , FITTED RIBBED NECK, STITCHING THROUGHOUT**
- **SIZE : XS,S,M,L,XL,2XL,3XL**
- **COLOUR: White, Black, Sport Grey, Forest Green, Charcole, Royal, Navy, Red**
- **FEATURES:REGULAR FIT , SILK SCREEN PRINTING , BREATHABLE , ULTRA SOFT FABRIC , TRUE TO SIZE**





**\$34.99**

**COTTON T SHIRT**



- **PRODUCT CODE: 000029**
- **DESCRIPTION : 100% COTTON**
- **DETAILS : DOUBLE NEEDLE , FITTED RIBBED NECK, STITCHING THROUGHOUT**
- **SIZE : XS,S,M,L,XL,2XL,3XL**
- **COLOUR: White, Black, Sport Grey, Forest Green, Charcole, Royal, Navy, Red**
- **FEATURES:REGULAR FIT , SILK SCREEN PRINTING , BREATHABLE , ULTRA SOFT FABRIC , TRUE TO SIZE**



**\$34.99**

**COTTON T SHIRT**



- **PRODUCT CODE: 000030**
- **DESCRIPTION : 100% COTTON**
- **DETAILS : DOUBLE NEEDLE , FITTED RIBBED NECK, STITCHING THROUGHOUT**
- **SIZE : XS,S,M,L,XL,2XL,3XL**
- **COLOUR: White, Black, Sport Grey, Forest Green, Charcole, Royal, Navy, Red**
- **FEATURES:REGULAR FIT , SILK SCREEN PRINTING , BREATHABLE , ULTRA SOFT FABRIC , TRUE TO SIZE**



**\$34.99**

**COTTON T SHIRT**



- **PRODUCT CODE: 000031**
- **DESCRIPTION : 100% COTTON**
- **DETAILS : DOUBLE NEEDLE , FITTED RIBBED NECK, STITCHING THROUGHOUT**
- **SIZE : XS,S,M,L,XL,2XL,3XL**
- **COLOUR: White, Black, Sport Grey, Forest Green, Charcole, Royal, Navy, Red**
- **FEATURES:REGULAR FIT , PLANE SHIRT , NECK LABEL , BREATHABLE , ULTRA SOFT FABRIC , TRUE TO SIZE**



**\$34.99**

**VINTAGE COTTON T SHIRT**



- **PRODUCT CODE: 000032**
- **DESCRIPTION : SULPHUR BLACK COTTON WITH ACID WASH**
- **DETAILS : DOUBLE NEEDLE , FITTED RIBBED NECK, STITCHING THROUGHOUT**
- **SIZE : XS,S,M,L,XL,2XL,3XL**
- **COLOUR: White, Black, Sport Grey, Forest Green, Charcole, Royal, Navy, Red**
- **FEATURES:REGULAR FIT , SILK SCREEN PRINTING , BREATHABLE , ULTRA SOFT FABRIC , TRUE TO SIZE**



**\$34.99**

**COTTON T SHIRT**



- **PRODUCT CODE: 000033**
- **DESCRIPTION : 100% COTTON**
- **D ETAILS : DOUBLE NEEDLE , FITTED RIBBED NECK, STITCHING T HROUGHOUT**
- **SIZE : XS,S,M,L,XL,2XL,3XL**
- **COLOUR: White, Black, Sport Grey, Forest Green, Charcole, Royal, Navy, Red**
- **FEATURES:REGULAR FIT , SILK SCREEN PRINTING , BREATHABLE , ULTRA SOFT FABRIC , TRUE TO SIZE**



**\$74.99**

**CANVAS SHOES**

- **PRODUCT CODE:** 000034
- **INNER MATERIAL :** TEXTILE
- **OUTER MATERIAL :**
- **CANVAS IDEAL FOR :**
- **COLOR:** White, Black, Red
- **HEEL PATTERN :** SOLID
- **OCCASION:**REGULAR FIT CASUAL





**\$74.99**

**CANVAS SHOES**

- **PRODUCT CODE: 000035**
- **INNER MATERIAL : TEXTILE**
- **OUTER MATERIAL : CANVAS**
- **IDEAL FOR : UNISEX**
- **COLOUR: Black**
- **HEEL PATTERN : SOLID**
- **OCCASION:REGULAR FIT CASUAL**





**\$74.99**

**CANVAS SHOES**

- **PRODUCT CODE: 000036**
- **INNER MATERIAL : TEXTILE**
- **OUTER MATERIAL : CANVAS**
- **IDEAL FOR : UNISEX**
- **COLOUR: Black & GREEN , BLACK AND WHITE**
- **HEEL PATTERN : SOLID**
- **OCCASION:REGULAR FIT CASUAL**





**\$74.99**

**CANVAS SHOES**

- **PRODUCT CODE: 000037**
- **INNER MATERIAL : TEXTILE**
- **OUTER MATERIAL : CANVAS**
- **IDEAL FOR : UNISEX**
- **COLOUR: Black & GREEN , BLACK AND WHITE**
- **HEEL PATTERN : SOLID**
- **OCCASION:REGULAR FIT CASUAL**





Sweatshirt \$74.99

Sweatpant \$ 64.99

**10% Discount**

## Women's TRACKSUIT

- **PRODUCT CODE: 000038**
- **DESCRIPTION : 65% COTTON & 35 P OLYSTER**
- **DETAILS : DOUBLE NEEDLE S TITCHING THROUGHOUT**
- **SIZE : XS,S,M,L,XL,2XL,3XL**
- **COLOUR: White, Black, Sport Grey, Forest Green, Charcole, Royal, Navy, Red**
- **FEATURES:REGULAR FIT , SILK SCREEN PRINTING , BREATHABLE , ULTRA SOFT FLEECE , ZIPPER**

Yt





Sweatshirt \$74.99

Sweatpant \$ 64.99

## Women's TRACKSUIT

**10% Discount**



kangaroo pocket

- **PRODUCT CODE: 000039**
- **DESCRIPTION : 65% COTTON & 35 P OLYSTER**
- **DETAILS : DOUBLE NEEDLE S TITCHING THROUGHOUT**
- **SIZE : XS,S,M,L,XL,2XL,3XL**
- **COLOUR: White, Black, Sport Grey, Forest Green, Charcole, Royal, Navy, Red**
- **FEATURES:REGULAR FIT , SILK SCREEN PRINTING , BREATHABLE , ULTRA SOFT FLEECE , TWO LAYERS HOOD , KANGAROO POCKET**



Sweatshirt \$74.99

Sweatpant \$ 64.99

**10% Discount**

## Women's TRACKSUIT

- **PRODUCT CODE: 000040**
- **DESCRIPTION : 65% COTTON & 35 P OLYSTER**
- **DETAILS : DOUBLE NEEDLE S TITCHING THROUGHOUT**
- **SIZE : XS,S,M,L,XL,2XL,3XL**
- **COLOUR: White, Black, Sport Grey, Forest Green, Charcole, Royal, Navy, Red**
- **FEATURES:REGULAR FIT , SILK SCREEN PRINTING , BREATHABLE , ULTRA SOFT FLEECE , TWO LAYERS HOOD , KANGAROO POCKET**





Sweatshirt \$74.99

Sweatpant \$ 64.99

**10% Discount**

## Women's TRACKSUIT

- **PRODUCT CODE: 000041**
- **DESCRIPTION : 65% COTTON & 35 P OLYSTER**
- **DETAILS : DOUBLE NEEDLE S TITCHING THROUGHOUT**
- **SIZE : XS,S,M,L,XL,2XL,3XL**
- **COLOUR: White, Black, Sport Grey, Forest Green, Charcole, Royal, Navy, Red**
- **FEATURES:REGULAR FIT , SILK SCREEN PRINTING , BREATHABLE , ULTRA SOFT FLEECE , TWO LAYERS HOOD , KANGAROO POCKET WITH ZIP , DRAWSTRING**





Sweatshirt \$74.99

Sweatpant \$ 64.99

**10% Discount**

## Women's TRACKSUIT

- **PRODUCT CODE: 000042**
- **DESCRIPTION : 100% POLYESTER**
- **DETAILS : DOUBLE NEEDLE STITCHING THROUGHOUT**
- **SIZE : XS,S,M,L,XL,2XL,3XL**
- **COLOUR: White, Black, Sport Grey, Forest Green, Charcole, Royal, Navy, Red**
- **FEATURES:REGULAR FIT , SILK SCREEN PRINTING , BREATHABLE , ULTRA SOFT FLEECE , TWO LAYERS HOOD , LONG DRAWSTRING**





**\$34.99**

**SWEAT SHIRT**



- **PRODUCT CODE: 000043**
- **DESCRIPTION : 80% COTTON & 20 P OLYSTER**
- **DETAILS : DOUBLE NEEDLE STITCHING THROUGHOUT**
- **SIZE : XS,S,M,L,XL,2XL,3XL**
- **COLOUR: White, Black, Sport Grey, Forest Green, Charcole, Royal, Navy, Red**
- **FEATURES:REGULAR FIT , SILK SCREEN PRINTING , BREATHABLE , ULTRA SOFT FLEECE , NECK LABEL**



**\$69.99**

**PULLOVER HOODIES**

- **PRODUCT CODE: 000044**
- **DESCRIPTION : 65% COTTON & 35 P OLYSTER**
- **DETAILS : DOUBLE NEEDLE S TITCHING THROUGHOUT**
- **SIZE : XS,S,M,L,XL,2XL,3XL**
- **COLOUR: White, Black, Sport Grey, Forest Green, Charcole, Royal, Navy, Red**
- **FEATURES:REGULAR FIT , SILK SCREEN PRINTING , BREATHABLE , ULTRA SOFT FLEECE , TWO LAYERS HOOD , KANGAROO POCKET , DRAWSTRING**





Sweatshirt \$69.99

Sweatpant \$ 59.99

**10% Discount**

**Oversize**



# MEN'S TRACKSUIT

- **PRODUCT CODE: 000045**
- **DESCRIPTION : 65% COTTON & 35 P OLYSTER**
- **DETAILS : DOUBLE NEEDLE S TITCHING THROUGHOUT**
- **SIZE : XS,S,M,L,XL,2XL,3XL**
- **COLOUR: White, Black, Sport Grey, Forest Green, Charcole, Royal, Navy, Red**
- **FEATURES:REGULAR FIT , SILK SCREEN PRINTING , BREATHABLE , ULTRA SOFT FLEECE , WITHOUT BOTTOM RIB**



**\$79.99**

**KNAPSACK**

- **PRODUCT CODE: 000046**
- **DESCRIPTION : NYLON MATERIAL**
- **DETAILS : DOUBLE NEEDLE STITCHING THROUGHOUT**
- **COLOUR: White, BLACK , YELLOW , GREEN , PINK**
- **FEATURES: ZIPPER CLOUSER , UNISEX , SOFT HANDLE STRAP**





**\$79.99**

**KNAPSACK**

- **PRODUCT CODE: 000047**
- **DESCRIPTION : NYLON MATERIAL**
- **DETAILS : DOUBLE NEEDLE STITCHING THROUGHOUT**
- **COLOUR: White, BLACK , YELLOW , GREEN , PINK**
- **FEATURES: ZIPPER CLOUSER , UNISEX , SOFT HANDLE STRAP**





\$79.99

KNAPSACK

- **PRODUCT CODE:** 000048
- **DESCRIPTION :** NYLON MATERIAL
- **D E T A I L S :** DOUBLE NEEDLE STITCHING THROUGHOUT
- **COLOUR:** White, BLACK , YELLOW , GREEN , PINK
- **FEATURES:** ZIPPER CLOUSER , UNISEX , SOFT HANDLE STRAP





\$32.99

YOGA WEAR

- **PRODUCT CODE:** 000049
- **DESCRIPTION :** 91% POLYESTER & 9% ELASTANE
- **DETAILS :** STITCHING THROUGHOUT
- **SIZE :** XS,S,M,L,XL,2XL,3XL
- **COLOUR:** White, Black, Sport Grey, Forest Green, Charcole, Royal, Navy, Red
- **FEATURES:**REGULAR FIT , DTF PRINTING , BREATHABLE , MACHINE WASH

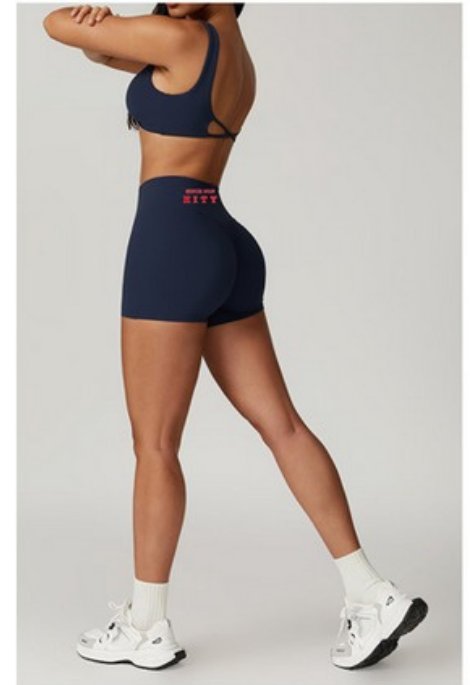




\$32.99

YOGA WEAR

- **PRODUCT CODE: 000050**
- **DESCRIPTION : 91% POLYESTER & 9% ELASTANE**
- **DETAILS : STITCHING THROUGHOUT**
- **SIZE : XS,S,M,L,XL,2XL,3XL**
- **COLOUR: White, Black, Sport Grey, Forest Green, Charcole, Royal, Navy, Red**
- **FEATURES:REGULAR FIT , DTF PRINTING , BREATHABLE , MACHINE WASH**

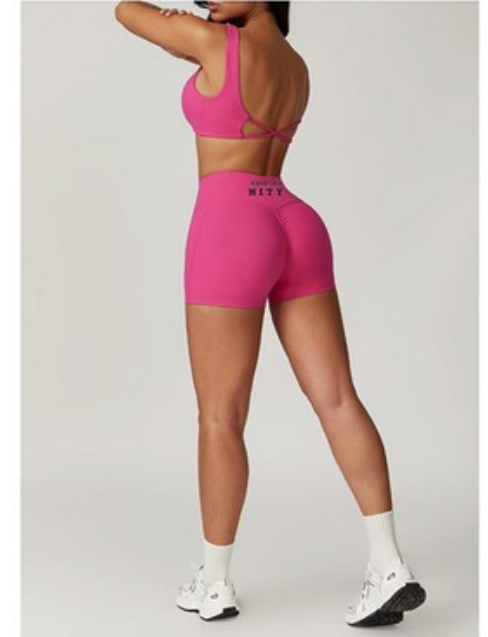




**\$32.99**

**YOGA WEAR**

- **PRODUCT CODE: 000051**
- **DESCRIPTION : 91% POLYESTER & 9% E LASTANE**
- **DETAILS : STITCHING THROUGHOUT**
- **SIZE : XS,S,M,L,XL,2XL,3XL**
- **COLOUR: White, Black, Sport Grey, Forest Green, Charcole, Royal, Navy, Red**
- **FEATURES:REGULAR FIT , DTF PRINTING , BREATHABLE , MACHINE WASH**





\$32.99

YOGA WEAR

- **PRODUCT CODE: 000052**
- **DESCRIPTION : 91% POLYESTER & 9% E LASTANE**
- **DETAILS : STITCHING THROUGHOUT**
- **SIZE : XS,S,M,L,XL,2XL,3XL**
- **COLOUR: White, Black, Sport Grey, Forest Green, Charcole, Royal, Navy, Red**
- **FEATURES:REGULAR FIT , DTF PRINTING , BREATHABLE , MACHINE WASH**





\$32.99

YOGA WEAR

- **PRODUCT CODE: 000053**
- **DESCRIPTION : 91% POLYESTER & 9% E LASTANE**
- **DETAILS : STITCHING THROUGHOUT**
- **SIZE : XS,S,M,L,XL,2XL,3XL**
- **COLOUR: White, Black, Sport Grey, Forest Green, Charcole, Royal, Navy, Red**
- **FEATURES:REGULAR FIT , DTF PRINTING , BREATHABLE , MACHINE WASH**

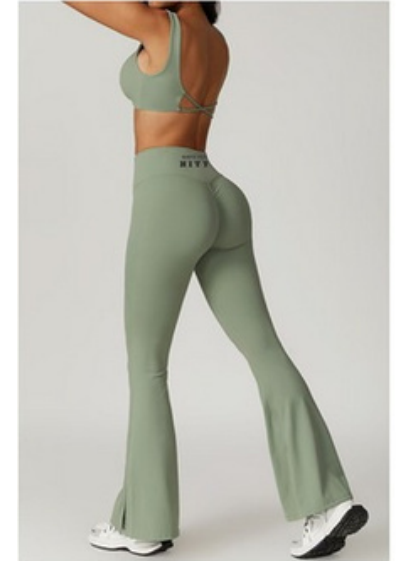




\$32.99

YOGA WEAR

- **PRODUCT CODE: 000054**
- **DESCRIPTION : 91% POLYESTER & 9% E LASTANE**
- **DETAILS : STITCHING THROUGHOUT**
- **SIZE : XS,S,M,L,XL,2XL,3XL**
- **COLOUR: White, Black, Sport Grey, Forest Green, Charcole, Royal, Navy, Red**
- **FEATURES:REGULAR FIT , DTF PRINTING , BREATHABLE , MACHINE WASH**

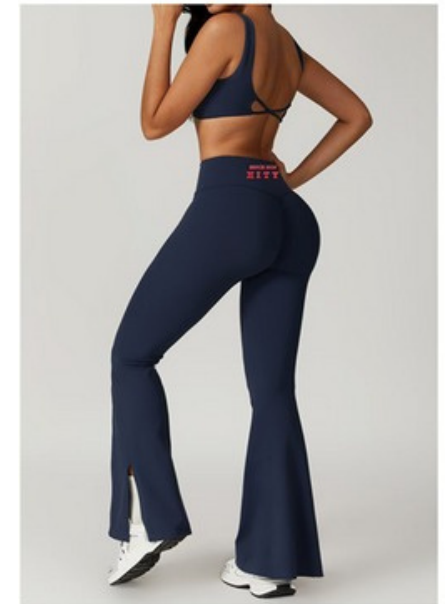




\$32.99

YOGA WEAR

- **PRODUCT CODE: 000055**
- **DESCRIPTION : 91% POLYESTER & 9% ELASTANE**
- **DETAILS : STITCHING THROUGHOUT**
- **SIZE : XS,S,M,L,XL,2XL,3XL**
- **COLOUR: White, Black, Sport Grey, Forest Green, Charcole, Royal, Navy, Red**
- **FEATURES:REGULAR FIT , DTF PRINTING , BREATHABLE , MACHINE WASH**

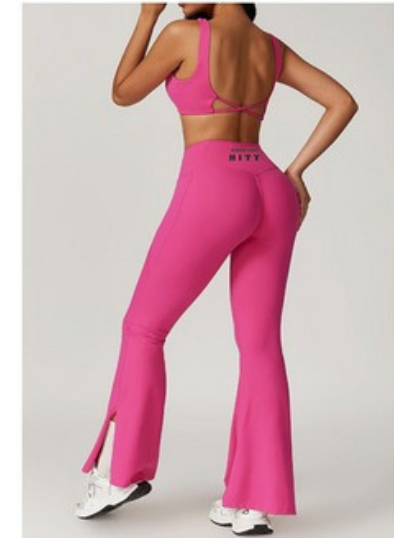




\$32.99

YOGA WEAR

- **PRODUCT CODE: 000055**
- **DESCRIPTION : 91% POLYESTER & 9% E LASTANE**
- **DETAILS : STITCHING THROUGHOUT**
- **SIZE : XS,S,M,L,XL,2XL,3XL**
- **COLOUR: White, Black, Sport Grey, Forest Green, Charcole, Royal, Navy, Red**
- **FEATURES:REGULAR FIT , DTF PRINTING , BREATHABLE , MACHINE WASH**

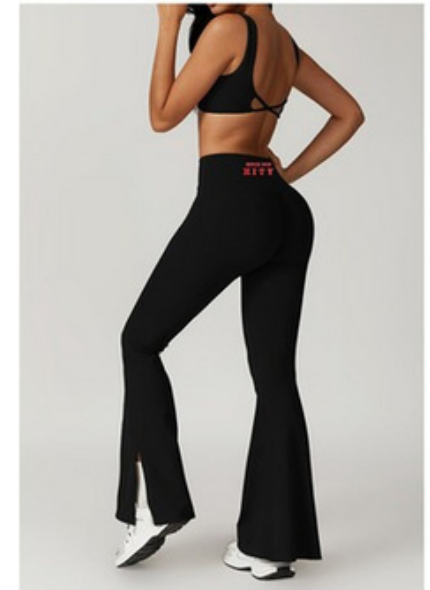




\$32.99

YOGA WEAR

- **PRODUCT CODE:** 000056
- **DESCRIPTION :** 91% POLYESTER & 9% ELASTANE
- **DETAILS :** STITCHING THROUGHOUT
- **SIZE :** XS,S,M,L,XL,2XL,3XL
- **COLOUR:** White, Black, Sport Grey, Forest Green, Charcole, Royal, Navy, Red
- **FEATURES:**REGULAR FIT , DTF PRINTING , BREATHABLE , MACHINE WASH

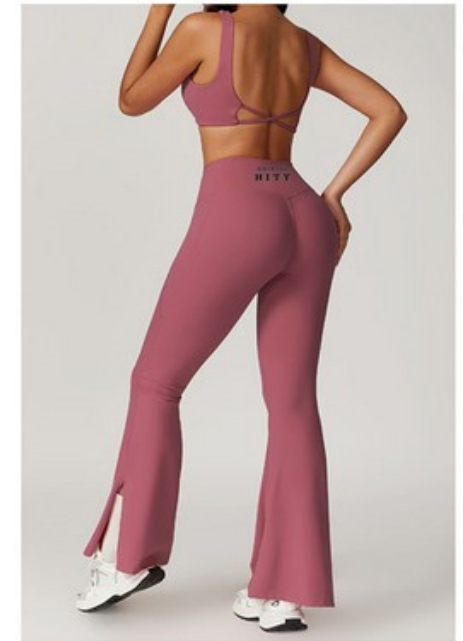




\$32.99

YOGA WEAR

- **PRODUCT CODE: 000057**
- **DESCRIPTION : 91% POLYESTER & 9% E LASTANE**
- **DETAILS : STITCHING THROUGHOUT**
- **SIZE : XS,S,M,L,XL,2XL,3XL**
- **COLOUR: White, Black, Sport Grey, Forest Green, Charcole, Royal, Navy, Red**
- **FEATURES:REGULAR FIT , DTF PRINTING , BREATHABLE , MACHINE WASH**

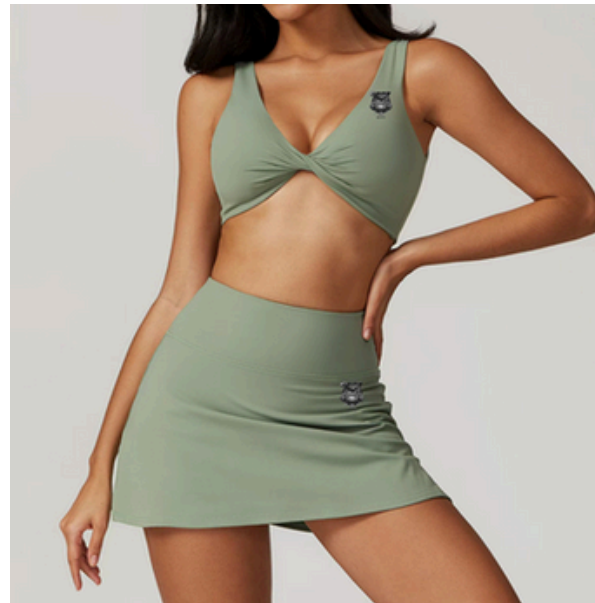




\$32.99

YOGA WEAR

- **PRODUCT CODE: 000058**
- **DESCRIPTION : 91% POLYESTER & 9% E LASTANE**
- **DETAILS : STITCHING THROUGHOUT**
- **SIZE : XS,S,M,L,XL,2XL,3XL**
- **COLOUR: White, Black, Sport Grey, Forest Green, Charcole, Royal, Navy, Red**
- **FEATURES:REGULAR FIT , DTF PRINTING , BREATHABLE , MACHINE WASH**





\$32.99

YOGA WEAR

- **PRODUCT CODE: 000059**
- **DESCRIPTION : 91% POLYESTER & 9% E LASTANE**
- **DETAILS : STITCHING THROUGHOUT**
- **SIZE : XS,S,M,L,XL,2XL,3XL**
- **COLOUR: White, Black, Sport Grey, Forest Green, Charcole, Royal, Navy, Red**
- **FEATURES:REGULAR FIT , DTF PRINTING , BREATHABLE , MACHINE WASH**

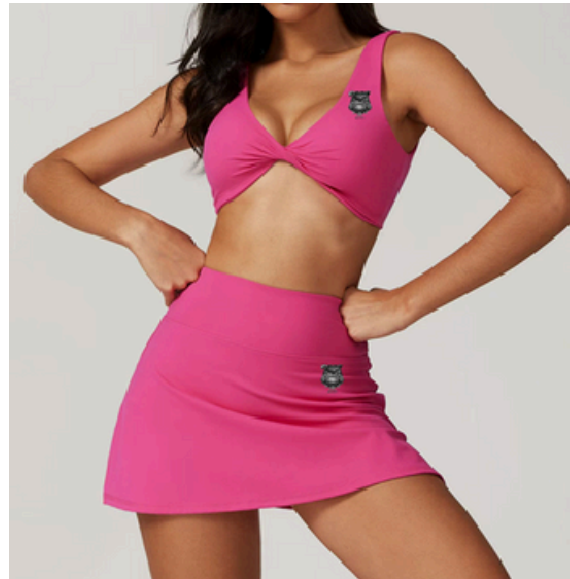




\$32.99

YOGA WEAR

- **PRODUCT CODE:** 000060
- **DESCRIPTION :** 91% POLYESTER & 9% E LASTANE
- **DETAILS :** STITCHING THROUGHOUT
- **SIZE :** XS,S,M,L,XL,2XL,3XL
- **COLOUR:** White, Black, Sport Grey, Forest Green, Charcole, Royal, Navy, Red
- **FEATURES:**REGULAR FIT , DTF PRINTING , BREATHABLE , MACHINE WASH





\$32.99

YOGA WEAR

- **PRODUCT CODE: 000061**
- **DESCRIPTION : 91% POLYESTER & 9% ELASTANE**
- **DETAILS : STITCHING THROUGHOUT**
- **SIZE : XS,S,M,L,XL,2XL,3XL**
- **COLOUR: White, Black, Sport Grey, Forest Green, Charcole, Royal, Navy, Red**
- **FEATURES:REGULAR FIT , DTF PRINTING , BREATHABLE , MACHINE WASH**





**\$32.99**

**YOGA WEAR**

- **PRODUCT CODE: 000062**
- **DESCRIPTION : 91% POLYESTER & 9% E LASTANE**
- **DETAILS : STITCHING THROUGHOUT**
- **SIZE : XS,S,M,L,XL,2XL,3XL**
- **COLOUR: White, Black, Sport Grey, Forest Green, Charcole, Royal, Navy, Red**
- **FEATURES:REGULAR FIT , DTF PRINTING , BREATHABLE , MACHINE WASH**

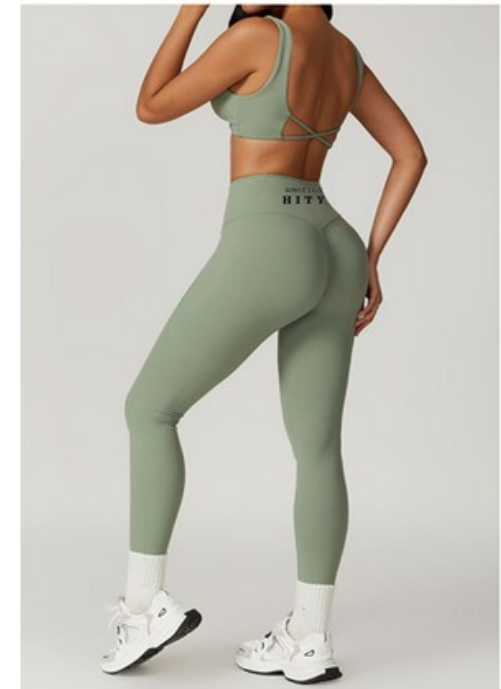




**\$32.99**

**YOGA WEAR**

- **PRODUCT CODE: 000063**
- **DESCRIPTION : 91% POLYESTER & 9% E LASTANE**
- **DETAILS : STITCHING THROUGHOUT**
- **SIZE : XS,S,M,L,XL,2XL,3XL**
- **COLOUR: White, Black, Sport Grey, Forest Green, Charcole, Royal, Navy, Red**
- **FEATURES:REGULAR FIT , DTF PRINTING , BREATHABLE , MACHINE WASH**

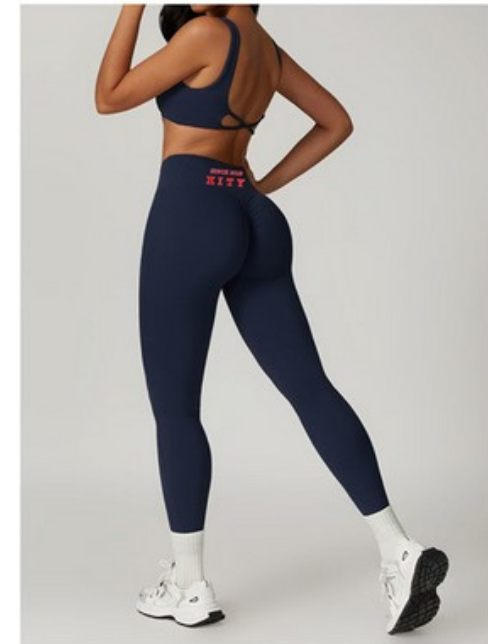




\$32.99

YOGA WEAR

- **PRODUCT CODE: 000064**
- **DESCRIPTION : 91% POLYESTER & 9% E LASTANE**
- **DETAILS : STITCHING THROUGHOUT**
- **SIZE : XS,S,M,L,XL,2XL,3XL**
- **COLOUR: White, Black, Sport Grey, Forest Green, Charcole, Royal, Navy, Red**
- **FEATURES:REGULAR FIT , DTF PRINTING , BREATHABLE , MACHINE WASH**

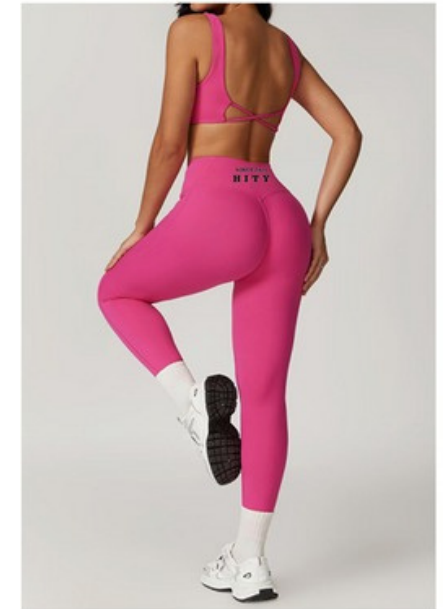




**\$32.99**

**YOGA WEAR**

- **PRODUCT CODE: 000065**
- **DESCRIPTION : 91% POLYESTER & 9% E LASTANE**
- **DETAILS : STITCHING THROUGHOUT**
- **SIZE : XS,S,M,L,XL,2XL,3XL**
- **COLOUR: White, Black, Sport Grey, Forest Green, Charcole, Royal, Navy, Red**
- **FEATURES:REGULAR FIT , DTF PRINTING , BREATHABLE , MACHINE WASH**

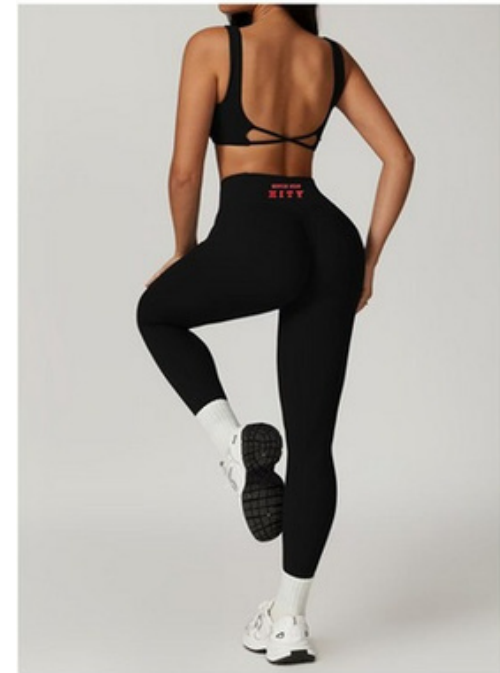




\$32.99

YOGA WEAR

- **PRODUCT CODE: 000066**
- **DESCRIPTION : 91% POLYESTER & 9% ELASTANE**
- **DETAILS : STITCHING THROUGHOUT**
- **SIZE : XS,S,M,L,XL,2XL,3XL**
- **COLOUR: White, Black, Sport Grey, Forest Green, Charcole, Royal, Navy, Red**
- **FEATURES:REGULAR FIT , DTF PRINTING , BREATHABLE , MACHINE WASH**

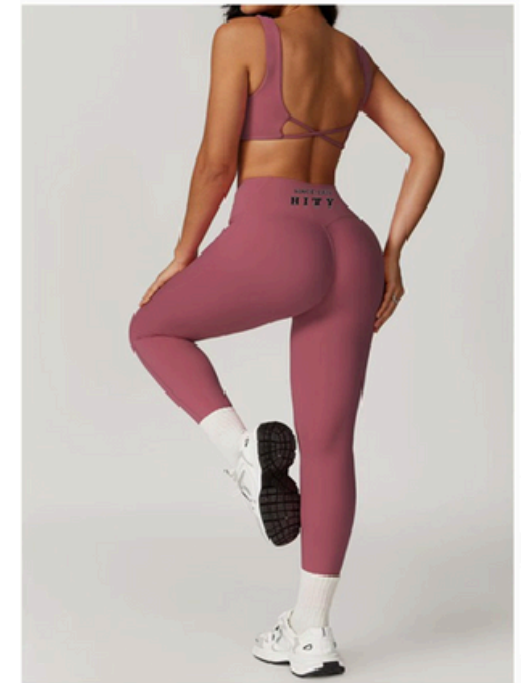




\$32.99

YOGA WEAR

- **PRODUCT CODE: 000067**
- **DESCRIPTION : 91% POLYESTER & 9% ELASTANE**
- **DETAILS : STITCHING THROUGHOUT**
- **SIZE : XS,S,M,L,XL,2XL,3XL**
- **COLOUR: White, Black, Sport Grey, Forest Green, Charcole, Royal, Navy, Red**
- **FEATURES:REGULAR FIT , DTF PRINTING , BREATHABLE , MACHINE WASH**

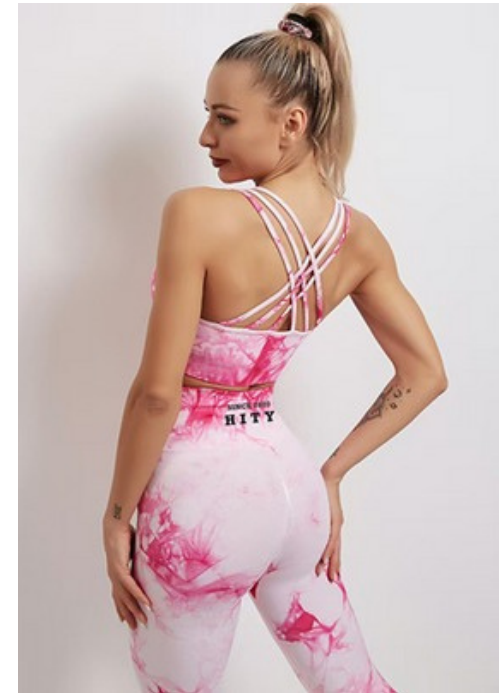




**\$32.99**

**YOGA WEAR**

- **PRODUCT CODE: 000068**
- **DESCRIPTION : 91% POLYESTER & 9% E LASTANE**
- **DETAILS : STITCHING THROUGHOUT**
- **SIZE : XS,S,M,L,XL,2XL,3XL**
- **COLOUR: White, Black, Sport Grey, Forest Green, Charcole, Royal, Navy, Red**
- **FEATURES:REGULAR FIT , SUBLIMATION , BREATHABLE , MACHINE WASH**

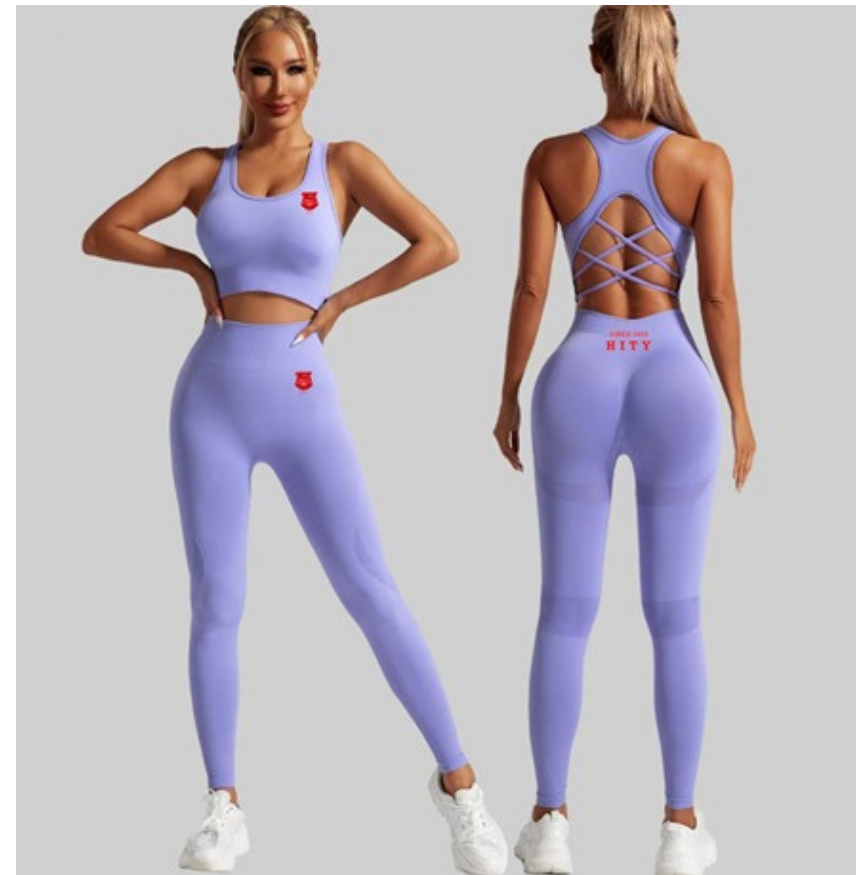




\$32.99

YOGA WEAR

- **PRODUCT CODE: 00069**
- **DESCRIPTION : 91% POLYESTER & 9% ELASTANE**
- **DETAILS : STITCHING THROUGHOUT**
- **SIZE : XS,S,M,L,XL,2XL,3XL**
- **COLOUR: White, Black, Sport Grey, Forest Green, Charcole, Royal, Navy, Red**
- **FEATURES:REGULAR FIT , DTF PRINTING , BREATHABLE , MACHINE WASH**

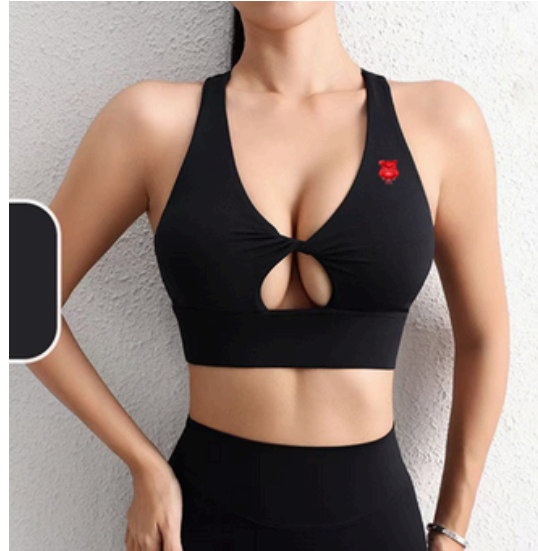




\$32.99

YOGA WEAR

- **PRODUCT CODE: 000070**
- **DESCRIPTION : 91% POLYESTER & 9% E LASTANE**
- **DETAILS : STITCHING THROUGHOUT**
- **SIZE : XS,S,M,L,XL,2XL,3XL**
- **COLOUR: White, Black, Sport Grey, Forest Green, Charcole, Royal, Navy, Red**
- **FEATURES:REGULAR FIT , SUBLIMATION , BREATHABLE , MACHINE WASH**





\$32.99

YOGA WEAR

- **PRODUCT CODE: 000071**
- **DESCRIPTION : 91% POLYESTER & 9% E LASTANE**
- **DETAILS : STITCHING THROUGHOUT**
- **SIZE : XS,S,M,L,XL,2XL,3XL**
- **COLOUR: White, Black, Sport Grey, Forest Green, Charcole, Royal, Navy, Red**
- **FEATURES:REGULAR FIT , DTF PRINTING , BREATHABLE , MACHINE WASH**





**\$32.99**

# YOGA WEAR

- **PRODUCT CODE: 000072**
- **DESCRIPTION : 91% POLYESTER & 9% ELASTANE**
- **DETAILS : STITCHING THROUGHOUT**
- **SIZE : XS,S,M,L,XL,2XL,3XL**
- **COLOUR: White, Black, Sport Grey, Forest Green, Charcole, Royal, Navy, Red**
- **FEATURES:REGULAR FIT , SUBLIMATION , BREATHABLE , MACHINE WASH**





\$62.99

POLKA DOTS CASUALWEAR

- **PRODUCT CODE: 000073**
- **DESCRIPTION : COTTON**
- **D ETAILS : STITCHING THROUGHOUT**
- **SIZE : XS,S,M,L,XL,2XL,3XL**
- **C OLOUR: White, Black, Sport Grey, Forest Green, Charcole, Royal, Navy, Red**
- **FEATURES:REGULAR FIT , SCREEN PRINTING , BREATHABLE , MACHINE WASH**





**\$67.99**

**JUMPSUIT**

- **PRODUCT CODE: 000074**
- **DESCRIPTION : 91% POLYESTER & 9% ELASTANE**
- **DETAILS : STITCHING THROUGHOUT**
- **SIZE : XS,S,M,L,XL,2XL,3XL**
- **COLOUR: White, Black, Sport Grey, Forest Green, Charcole, Royal, Navy, Red**
- **FEATURES:REGULAR FIT , SUBLIMATION , BREATHABLE , FRONT SMALL ZIP , MACHINE WASH , LACE UP**





**\$67.99**

**JUMPSUIT**

- **PRODUCT CODE: 000075**
- **DESCRIPTION : 91% POLYESTER & 9% ELASTANE**
- **DETAILS : STITCHING THROUGHOUT**
- **SIZE : XS,S,M,L,XL,2XL,3XL**
- **COLOUR: White, Black, Sport Grey, Forest Green, Charcole, Royal, Navy, Red**
- **FEATURES:REGULAR FIT , SUBLIMATION , BREATHABLE , STYLISH , MACHINE WASH**





**\$89.99**

**DENIM JUMPSUIT**

- **PRODUCT CODE: 000076**
- **DESCRIPTION : DENIM BLUE**
- **D ETAILS : STITCHING THROUGHOUT**
- **SIZE : XS,S,M,L,XL,2XL,3XL**
- **C OLOUR: BLUE**
- **FEATURES:REGULAR FIT , EMBROIDERY , BREATHABLE , FRONT BUTTON CLOSURE , MACHINE WASH**





**\$89.99**

**DENIM JUMPSUIT**

- **PRODUCT CODE: 000077**
- **DESCRIPTION : DENIM BLUE**
- **D ETAILS : STITCHING THROUGHOUT**
- **SIZE : XS,S,M,L,XL,2XL,3XL**
- **C OLOUR: BLUE**
- **FEATURES:REGULAR FIT , EMBROIDERY , BREATHABLE , FRONT BUTTON CLOSURE , MACHINE WASH**





**\$92.99**

**HOLLOW JUMPSUIT**

- **PRODUCT CODE: 000078**
- **DESCRIPTION : 91% POLYESTER & 9% E LASTANE**
- **DETAILS : STITCHING THROUGHOUT**
- **S IZE : XS,S,M,L,XL,2XL,3XL**
- **COLOUR: White, Black, Sport Grey, Forest Green, Charcole, Royal, Navy, Red**
- **FEATURES:REGULAR FIT , SUBLIMATION , BREATHABLE , FRONT SMALL ZIP , MACHINE WASH**





# CONTACT US

[Hardintheyardent.com](http://Hardintheyardent.com)

[support@hardintheyardent.com](mailto:support@hardintheyardent.com)

909 562-9579